



PAS SERIES

PRODUCT DIMENSIONS & SPECIFICATIONS

UNCASED CEILING MOUNT ELECTRIC HEAT DX COOL AIR HANDLER

WARRANTY

ONE YEAR LIMITED
PARTS WARRANTY

STANDARD FEATURES

■ APPLICATION VERSATILITY

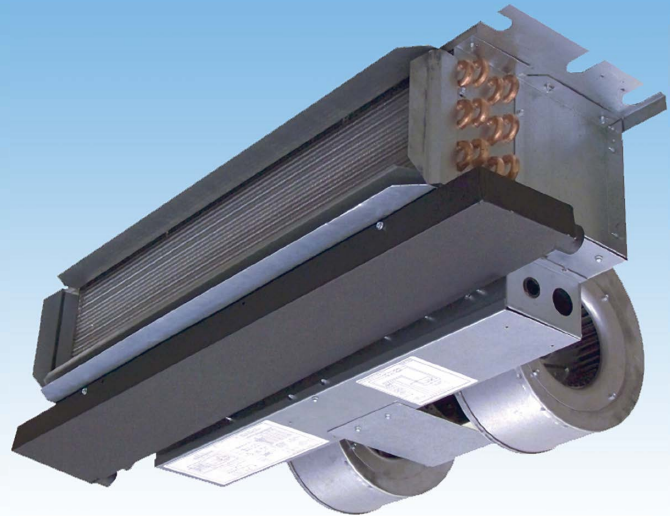
Built in mounting tabs for ceiling or fur-down mounting. Louvered ceiling access panel has separate frame that attaches to ceiling joists. Solid access panel available for use with end return installations. Compatible with most brands of air conditioners or heat pumps.

■ MOTOR

Direct drive multi-speed blowers circulate air quietly and efficiently. Two speed motors allow for precise air volume selection. Motor speeds can be easily selected via motor terminals. Blowers mounted on plate so they can be easily removed for service.

■ LOW LEAKAGE

Less than 2% air leakage from cabinet when installed in enclosure and tested in accordance with ASHRAE 193. Sturdy, fully insulated galvanized enclosure with ducted return available as option.



■ ELECTRIC HEAT KITS

Heat kits available in 3, 5, 6, 8, & 10 KW. Models with electric heat include sequencers and temperature limit switches for safe, efficient operation. Easily accessible controls for quick service.

■ ELECTRONIC CIRCUIT BOARD

Electronic circuit board provides 30 secs ON/OFF blower time delay extracting more heat/cool from the coil. Automotive-style pull fuse protection on the circuit board to provide low voltage and transformer protection.

■ DIRECT EXPANSION COIL

High efficiency rifled copper tubes/enhanced aluminum fins provide maximum heat transfer. All coils immersion tested at 500 psi then nitrogen pressurized and factory sealed for maximum reliability. Liquid-line Schrader allows pre-installation pressure testing. Available with either orifice or TXV metering device factory installed. Field-installable bolt-on TXVs are also available. Primary & secondary condensate drain. All drain connections are 3/4" MPT. Powder-painted metal drain pan. Access door allows for coil cleaning. Certified for use with either R22 or R410A.



MANUFACTURED
IN THE USA

OPTIONS
SEE OPTIONS MENU

WWW.AspenMFG.com

Last Revised: 06/24/21 | © 2021 Aspen Manufacturing

Representative image only. Some models may vary in appearance. Due to continuous product improvement, specifications are subject to change without notice.

Heating and Cooling Performance and Electrical Data										
Model	Heat Kit	Nominal Cooling (BTUS)	Performance Data				Electrical Data			
			Heating KW		Heating KBTUH		Minimum Circuit Ampacity (MCA)		Max Breaker or Fuse Size	
			208V	240V	208V	240V	208V	240V	208V	240V
PAS23	HTS00	18,000	0	0.0	0.0	0.0	1.8	1.8	15.0	15.0
	HTS03		2.3	3.0	7.8	10.2	15.3	17.4	20.0	20.0
	HTS05		3.7	4.8	12.6	16.4	23.4	26.8	25.0	30.0
	HTS06		4.6	6.0	15.7	20.5	28.8	33.0	30.0	35.0
	HTS08		6.1	8.0	20.8	27.3	37.8	43.4	40.0	45.0
	HTS10		7.4	9.6	25.3	32.8	45.0	51.8	45.0	60.0
PAS26	HTS00	24,000	0	0.0	0.0	0.0	1.8	1.8	15.0	15.0
	HTS03		2.3	3.0	7.8	10.2	15.3	17.4	20.0	20.0
	HTS05		3.7	4.8	12.6	16.4	23.4	26.8	25.0	30.0
	HTS06		4.6	6.0	15.7	20.5	28.8	33.0	30.0	35.0
	HTS08		6.1	8.0	20.8	27.3	37.8	43.4	40.0	45.0
	HTS10		7.4	9.6	25.3	32.8	45.0	51.8	45.0	60.0
PAS27	HTS00	24,000	0	0.0	0.0	0.0	1.8	1.8	15.0	15.0
	HTS03		2.3	3.0	7.8	10.2	15.3	17.4	20.0	20.0
	HTS05		3.7	4.8	12.6	16.4	23.4	26.8	25.0	30.0
	HTS06		4.6	6.0	15.7	20.5	28.8	33.0	30.0	35.0
	HTS08		6.1	8.0	20.8	27.3	37.8	43.4	40.0	45.0
	HTS10		7.4	9.6	25.3	32.8	45.0	51.8	45.0	60.0
PAS29	HTS00	24,000	0	0.0	0.0	0.0	2.7	2.7	15.0	15.0
	HTS03		2.3	3.0	7.8	10.2	16.2	18.3	20.0	20.0
	HTS05		3.7	4.8	12.6	16.4	24.3	27.7	25.0	30.0
	HTS06		4.6	6.0	15.7	20.5	29.7	33.9	30.0	35.0
	HTS08		6.1	8.0	20.8	27.3	38.8	44.4	40.0	45.0
	HTS10		7.4	9.6	25.3	32.8	46.0	52.7	50.0	60.0
PAS31	HTS00	30,000	0	0.0	0.0	0.0	2.7	2.7	15.0	15.0
	HTS03		2.3	3.0	7.8	10.2	16.2	18.3	20.0	20.0
	HTS05		3.7	4.8	12.6	16.4	24.3	27.7	25.0	30.0
	HTS06		4.6	6.0	15.7	20.5	29.7	33.9	30.0	35.0
	HTS08		6.1	8.0	20.8	27.3	38.8	44.4	40.0	45.0
	HTS10		7.4	9.6	25.3	32.8	46.0	52.7	50.0	60.0
PAT34	HTS00	30,000	0	0.0	0.0	0.0	2.7	2.7	15.0	15.0
	HTS03		2.3	3.0	7.8	10.2	16.2	18.3	20.0	20.0
	HTS05		3.7	4.8	12.6	16.4	24.3	27.7	25.0	30.0
	HTS06		4.6	6.0	15.7	20.5	29.7	33.9	30.0	35.0
	HTS08		6.1	8.0	20.8	27.3	38.8	44.4	40.0	45.0
	HTS10		7.4	9.6	25.3	32.8	46.0	52.7	50.0	60.0
PAS35	HTS00	30,000	0	0.0	0.0	0.0	2.7	2.7	15.0	15.0
	HTS03		2.3	3.0	7.8	10.2	16.2	18.3	20.0	20.0
	HTS05		3.7	4.8	12.6	16.4	24.3	27.7	25.0	30.0
	HTS06		4.6	6.0	15.7	20.5	29.7	33.9	30.0	35.0
	HTS08		6.1	8.0	20.8	27.3	38.8	44.4	40.0	45.0
	HTS10		7.4	9.6	25.3	32.8	46.0	52.7	50.0	60.0
PAS38	HTS00	36,000	0	0.0	0.0	0.0	2.7	2.7	15.0	15.0
	HTS03		2.3	3.0	7.8	10.2	16.2	18.3	20.0	20.0
	HTS05		3.7	4.8	12.6	16.4	24.3	27.7	25.0	30.0
	HTS06		4.6	6.0	15.7	20.5	29.7	33.9	30.0	35.0
	HTS08		6.1	8.0	20.8	27.3	38.8	44.4	40.0	45.0
	HTS10		7.4	9.6	25.3	32.8	46.0	52.7	50.0	60.0

BLOWER DATA

MODEL	SPEED TAP	CFM VS. STATIC PRESSURE								
		HP	0.05	0.10	0.15	0.20	0.25	0.30	0.35	0.40
PAS23	HIGH	1/4	880	800	770	740	705	670	640	610
	LOW		732	711	690	645	620	600	570	543
PAS26	HIGH	1/4	880	800	770	740	705	670	640	610
	LOW		732	711	690	645	620	600	570	543
PAS27	HIGH	1/4	990	960	910	870	815	760	730	690
	LOW		820	790	765	732	690	650	610	595
PAS28	HIGH	1/3	1040	1008	956	914	856	798	767	725
	LOW		861	830	803	769	725	683	640	625
PAS29	HIGH	1/3	1040	1008	956	914	856	798	767	725
	LOW		861	830	803	769	725	683	640	625
PAS31	HIGH	1/3	1040	1008	956	914	856	798	767	725
	LOW		861	830	803	769	725	683	640	625
PAS34	HIGH	1/3	1350	1325	1285	1225	1190	1140	1090	1050
	LOW		1040	1030	1010	990	960	940	900	850
PAS35	HIGH	1/4	1040	1008	956	914	856	798	767	725
	LOW		861	830	803	769	725	683	640	625
PAS38	HIGH	1/3	1350	1325	1285	1225	1190	1140	1090	1050
	LOW		1040	1030	1010	990	960	940	900	850

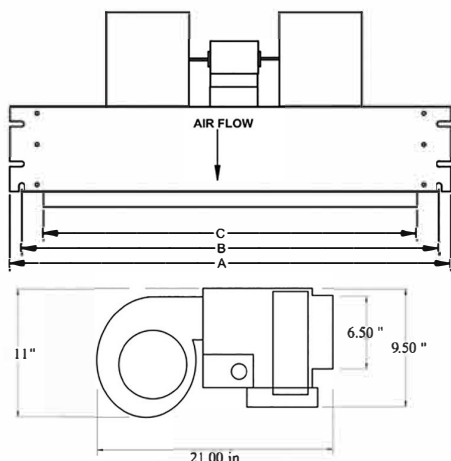
Note: Units should not be applied to a system with less than 350 CFM/Ton airflow. Add 0.05 static when enclosure and/or ceiling panel are used.

AIR HANDLER CHASSIS NOMENCLATURE

P	A	S	18	G	-001
ASPEN PRO Air Handler	<u>Voltage</u> A = 240V PSC Motor	<u>Configuration</u> S = Uncased Ceiling Mount	Nominal Tonnage (KBTUH)	<u>Metering Device</u> 4 = R410A non-bleed A/C or H/P TXV 6 = R410A 20% bleed A/C or H/P TXV B = R22 20% bleed A/C or H/P TXV F = R22 Flo-rater G = R410A Flo-rater X = R22 non-bleed A/C or H/P TXV	Option Code

ELECTRIC HEAT KIT NOMENCLATURE

H	T	S	10
H = Fits PAS, PAT, PES, PET	T = Terminal Block	S = Small Cabinet (23 - 38)	Heat Strip 00 = NO Heat 03 = 3 KW 05 = 5 KW 06 = 6 KW 08 = 8 KW 10 = 10 KW



ENCLOSURES DIMENSIONS

UNIT MODEL	A"	B"	C"	Weight (lbs)	Skid Qty.
PAS 23/26	37 1/4	34-5/8	30	125	8
PAS 27/31	43 1/4	40-5/8	36	135	8
PAS 28/29/34	49 1/4	46 5/8	42	145	8
PAS 38/38	56 1/4	53 5/8	48	155	8

Copper stub out diameter: Suction: 3/4", Liquid: 3/8"

VERSATILITY

Equipped with hidden frame feature. Fastens to the outside wall surface and does not have to perfectly match the hole opening. Frame screws are not visible after installation. Available in either solid (S) or louvered (L) style.

MATERIALS

Galvanized steel construction with smooth powder paint finish

FILTER

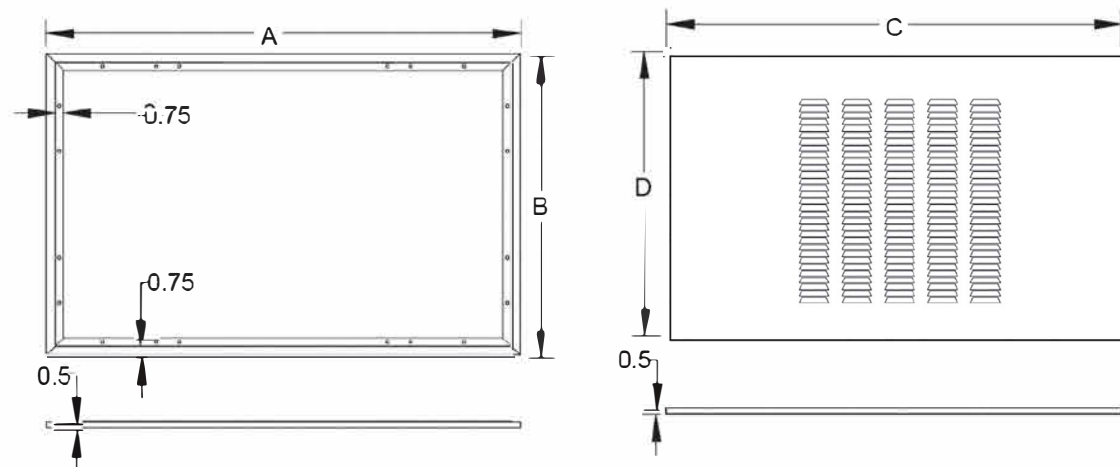
20" x 20" x 1" field supplied.

WARRANTY

ONE YEAR LIMITED PARTS WARRANTY

ACCESS DOOR DIMENSIONS

FOR USE WITH	PANEL MODEL	PAS ACCESS DOOR AND FRAME				FILTERS (QTY)
		A"	B"	C"	D"	
PAS 23/26	GAD-1(S/L)	43-1/2	27-1/2	41-1/2	26	1
PAS 27/31	GAD-5(S/L)	49-1/2	27-1/2	47-1/2	26	2
PAS 28/29/34	GAD-2(S/L)	55-1/2	27-1/2	53-1/2	26	2
PAS 35/38	GAD-6(S/L)	63-1/2	27-1/2	61-1/2	26	2



WARNING

CANCER AND REPRODUCTIVE HARM
WWW.P65WARNINGS.CA.GOV



Dependable, Lasting, Indoor-Comfort

373 Atascocita Rd | Humble, TX 77396
 P: 800.423.9007 | F: 281.441.6510

www.AspenMFG.com



PAT SERIES

PRODUCT DIMENSIONS & SPECIFICATIONS

CASED CEILING MOUNT ELECTRIC HEAT DX COOL AIR HANDLER

WARRANTY

ONE YEAR LIMITED
PARTS WARRANTY

STANDARD FEATURES

■ APPLICATION VERSATILITY

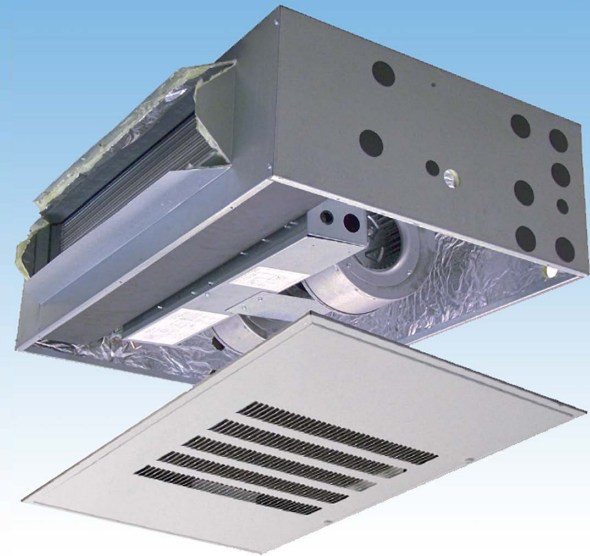
Built in mounting tabs for ceiling or fur-down mounting. Louvered ceiling access panel has separate frame that attaches to ceiling joists. Solid access panel available for use with end return installations. Compatible with most brands of air conditioners or heat pumps.

■ MOTOR

Direct drive multi-speed blowers circulate air quietly and efficiently. Two speed motors allow for precise air volume selection. Motor speeds can be easily selected via motor terminals. Blowers mounted on plate so they can be easily removed for service.

■ LOW LEAKAGE CABINET

Less than 2% air leakage from cabinet when tested in accordance with ASHRAE standard 193. Sturdy, fully insulated galvanized steel cabinet with knockout for duct return.



■ ELECTRIC HEAT KITS

Heat kits available in 3, 5, 6, 8, & 10 KW. Models with electric heat include sequencers and temperature limit switches for safe, efficient operation. Easily accessible controls for quick service.

■ ELECTRONIC CIRCUIT BOARD

Electronic circuit board provides 30 secs ON/OFF blower time delay extracting more heat/cool from the coil.

■ DIRECT EXPANSION COIL

High efficiency rifled copper tubes/enhanced aluminum fins provide maximum heat transfer. All coils immersion tested at 500 psi then nitrogen pressurized and factory sealed for maximum reliability. Liquid-line Schrader allows pre-installation pressure testing. Available with either orifice or TXV metering device factory installed. Field-installable bolt-on TXVs are also available. Primary & secondary condensate drain. All drain connections are 3/4" NPT. Powder-painted metal drain pan. Access door allows for coil cleaning. Certified for use with either R22 or R410A.



MANUFACTURED
IN THE USA

OPTIONS
SEE OPTIONS MENU

WWW.AspenMFG.com

Last Revised: 06/24/21 | © 2021 Aspen Manufacturing

Representative image only. Some models may vary in appearance. Due to continuous product improvement, specifications are subject to change without notice.

Heating and Cooling Performance and Electrical Data										
Model	Heat Kit	Nominal Cooling (BTUS)	Performance Data				Electrical Data			
			Heating KW		Heating KBTUH		Minimum Circuit Ampacity (MCA)		Max Breaker or Fuse Size	
			208V	240V	208V	240V	208V	240V	208V	240V
PAT23	HTS00	18,000	0.0	0.0	0.0	0.0	1.8	1.8	15.0	15.0
	HTS03		2.3	3.0	7.8	10.2	15.3	17.4	20.0	20.0
	HTS05		3.7	4.8	12.6	16.4	23.4	26.8	25.0	30.0
	HTS06		4.6	6.0	15.7	20.5	28.8	33.0	30.0	35.0
	HTS08		6.1	8.0	20.8	27.3	37.8	43.4	40.0	45.0
	HTS10		7.4	9.6	25.3	32.8	45.0	51.8	45.0	60.0
PAT26	HTS00	24,000	0	0.0	0.0	0.0	1.8	1.8	15.0	15.0
	HTS03		2.3	3.0	7.8	10.2	15.3	17.4	20.0	20.0
	HTS05		3.7	4.8	12.6	16.4	23.4	26.8	25.0	30.0
	HTS06		4.6	6.0	15.7	20.5	28.8	33.0	30.0	35.0
	HTS08		6.1	8.0	20.8	27.3	37.8	43.4	40.0	45.0
	HTS10		7.4	9.6	25.3	32.8	45.0	51.8	45.0	60.0
PAT27	HTS00	24,000	0	0.0	0.0	0.0	1.8	1.8	15.0	15.0
	HTS03		2.3	3.0	7.8	10.2	15.3	17.4	20.0	20.0
	HTS05		3.7	4.8	12.6	16.4	23.4	26.8	25.0	30.0
	HTS06		4.6	6.0	15.7	20.5	28.8	33.0	30.0	35.0
	HTS08		6.1	8.0	20.8	27.3	37.8	43.4	40.0	45.0
	HTS10		7.4	9.6	25.3	32.8	45.0	51.8	45.0	60.0
PAT29	HTS00	24,000	0	0.0	0.0	0.0	2.7	2.7	15.0	15.0
	HTS03		2.3	3.0	7.8	10.2	16.2	18.3	20.0	20.0
	HTS05		3.7	4.8	12.6	16.4	24.3	27.7	25.0	30.0
	HTS06		4.6	6.0	15.7	20.5	29.7	33.9	30.0	35.0
	HTS08		6.1	8.0	20.8	27.3	38.8	44.4	40.0	45.0
	HTS10		7.4	9.6	25.3	32.8	46.0	52.7	50.0	60.0
PAT31	HTS00	30,000	0	0.0	0.0	0.0	2.7	2.7	15.0	15.0
	HTS03		2.3	3.0	7.8	10.2	16.2	18.3	20.0	20.0
	HTS05		3.7	4.8	12.6	16.4	24.3	27.7	25.0	30.0
	HTS06		4.6	6.0	15.7	20.5	29.7	33.9	30.0	35.0
	HTS08		6.1	8.0	20.8	27.3	38.8	44.4	40.0	45.0
	HTS10		7.4	9.6	25.3	32.8	46.0	52.7	50.0	60.0
PAT34	HTS00	30,000	0	0.0	0.0	0.0	2.7	2.7	15.0	15.0
	HTS03		2.3	3.0	7.8	10.2	16.2	18.3	20.0	20.0
	HTS05		3.7	4.8	12.6	16.4	24.3	27.7	25.0	30.0
	HTS06		4.6	6.0	15.7	20.5	29.7	33.9	30.0	35.0
	HTS08		6.1	8.0	20.8	27.3	38.8	44.4	40.0	45.0
	HTS10		7.4	9.6	25.3	32.8	46.0	52.7	50.0	60.0
PAT35	HTS00	30,000	0	0.0	0.0	0.0	2.7	2.7	15.0	15.0
	HTS03		2.3	3.0	7.8	10.2	16.2	18.3	20.0	20.0
	HTS05		3.7	4.8	12.6	16.4	24.3	27.7	25.0	30.0
	HTS06		4.6	6.0	15.7	20.5	29.7	33.9	30.0	35.0
	HTS08		6.1	8.0	20.8	27.3	38.8	44.4	40.0	45.0
	HTS10		7.4	9.6	25.3	32.8	46.0	52.7	50.0	60.0
PAT38	HTS00	36,000	0	0.0	0.0	0.0	2.7	2.7	15.0	15.0
	HTS03		2.3	3.0	7.8	10.2	16.2	18.3	20.0	20.0
	HTS05		3.7	4.8	12.6	16.4	24.3	27.7	25.0	30.0
	HTS06		4.6	6.0	15.7	20.5	29.7	33.9	30.0	35.0
	HTS08		6.1	8.0	20.8	27.3	38.8	44.4	40.0	45.0
	HTS10		7.4	9.6	25.3	32.8	46.0	52.7	50.0	60.0

BLOWER DATA

MODEL	SPEED TAP	CFM VS. STATIC PRESSURE								
		HP	0.05	0.10	0.15	0.20	0.25	0.30	0.35	0.40
PAT23	HIGH	1/4	880	800	770	740	705	670	640	610
	LOW		732	711	690	645	620	600	570	543
PAT26	HIGH	1/4	880	800	770	740	705	670	640	610
	LOW		732	711	690	645	620	600	570	543
PAT27	HIGH	1/4	990	960	910	870	815	760	730	690
	LOW		820	790	765	732	690	650	610	595
PAT28	HIGH	1/3	1040	1008	956	914	856	798	767	725
	LOW		861	830	803	769	725	683	640	625
PAT29	HIGH	1/3	1040	1008	956	914	856	798	767	725
	LOW		861	830	803	769	725	683	640	625
PAT31	HIGH	1/3	1040	1008	956	914	856	798	767	725
	LOW		861	830	803	769	725	683	640	625
PAT34	HIGH	1/3	1350	1325	1285	1225	1190	1140	1090	1050
	LOW		1040	1030	1010	990	960	940	900	850
PAT35	HIGH	1/4	1040	1008	956	914	856	798	767	725
	LOW		861	830	803	769	725	683	640	625
PAT38	HIGH	1/3	1350	1325	1285	1225	1190	1140	1090	1050
	LOW		1040	1030	1010	990	960	940	900	850

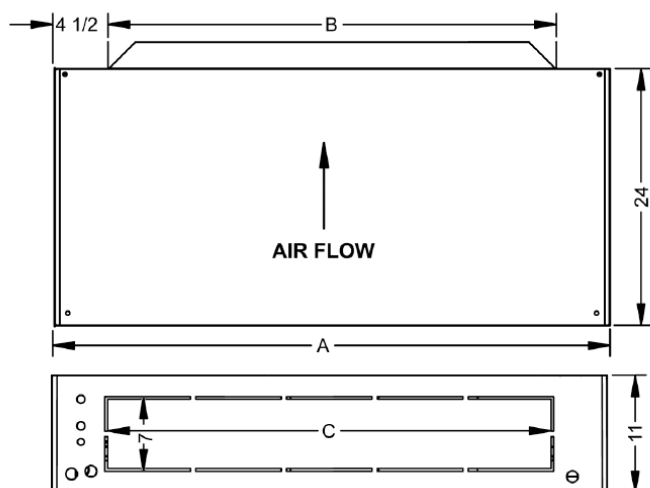
Note: Units should not be applied to a system with less than 350 CFM/Ton airflow. Add 0.05 static when enclosure and/or ceiling panel are used.

AIR HANDLER CHASSIS NOMENCLATURE

P	A	T	18	G	-001
AspenPRO Air Handler	<u>Voltage</u> A = 240V PSC Motor B = 120V PSC Motor	<u>Configuration</u> T = Cased Ceiling Mount	Nominal Tonnage (KBTUH)	<u>Metering Device</u> 4 = R410A non-bleed A/C or H/P TXV 6 = R410A 20% bleed A/C or H/P TXV B = R22 20% bleed A/C or H/P TXV F = R22 Flo-rater G = R410A Flo-rater X = R22 non-bleed A/C or H/P TXV	Option Code

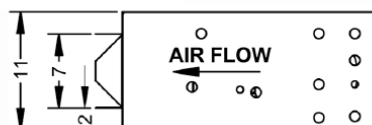
ELECTRIC HEAT KIT NOMENCLATURE

H	T	S	10
H = Fits PAS, PAT, PES, PET	T = Terminal Block	S = Small Cabinet (23-38)	Heat Strip 00 = NO Heat 03 = 3 KW 05 = 5 KW 06 = 6 KW 08 = 8 KW 10 = 10 KW



ENCLOSURES DIMENSIONS

UNIT MODEL	A"	B"	C"	Weight (lbs)	Skid Qty.
PAT 23/26	40	30	30	125	5
PAT 27/31	46	36	36	135	5
PAT 28/29/34	52	42	42	145	5
PAT 38/38	60	48	48	155	5



Copper stub out diameter: Suction: 3/4", Liquid: 3/8"

VERSATILITY

Equipped with hidden frame feature. Fastens to the outside wall surface and does not have to perfectly match the hole opening. Frame screws are not visible after installation. Available in either solid (S) or louvered (L) style.

MATERIALS

Galvanized steel construction with smooth powder paint finish.

FILTER

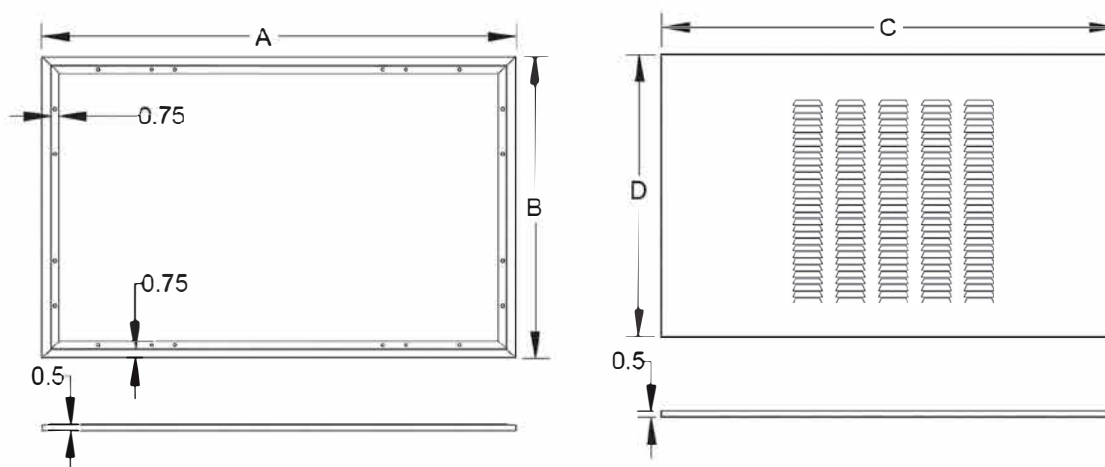
20" x 20" x 1" field supplied.

WARRANTY

ONE YEAR LIMITED PARTS WARRANTY

ACCESS DOOR DIMENSIONS

FOR USE WITH	PANEL MODEL	PAT ACCESS DOOR AND FRAME				FILTERS (QTY)
		A"	B"	C"	D"	
PAT 23/26	GAD-1(S/L)	43-1/2	27-1/2	41-1/2	26	1
PAT 27/31	GAD-5(S/L)	49-1/2	27-1/2	47-1/2	26	2
PAT 28/29/34	GAD-2(S/L)	55-1/2	27-1/2	53-1/2	26	2
PAT 35/38	GAD-6(S/L)	63-1/2	27-1/2	61-1/2	26	2



CAP KIT PART NUMBER

PART NUMBER	MODEL NUMBER	ENCLOSURE SIZE
CAP-1	PAT 23	40"X24"X11"
CAP-2	PAT 27/31	46"X24"X11"
CAP-3	PAT 29/34	52"X24"X11"
CAP-4	PAT 36/38	60"X24"X11"

Note: CAP kit is an insulated panel that covers the entire bottom opening and is utilized for optional ducted return configuration



373 Atascocita Rd | Humble, TX 77396
P: 800.423.9007 | F: 281.441.6510

www.AspenMFG.com

	WARNING
	CANCER AND REPRODUCTIVE HARM WWW.P65WARNINGS.CA.GOV